



Waasmoowin

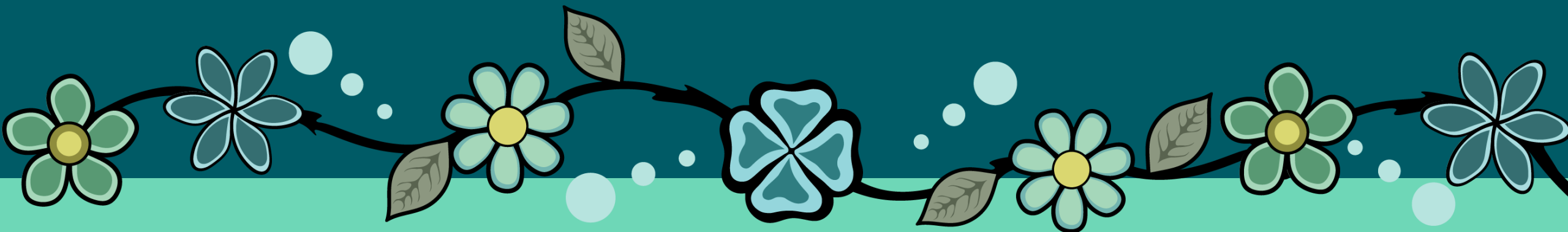
North Shore Link and Northeast Power Line Project Community Meeting

Whitefish River First Nation

October 7, 2025

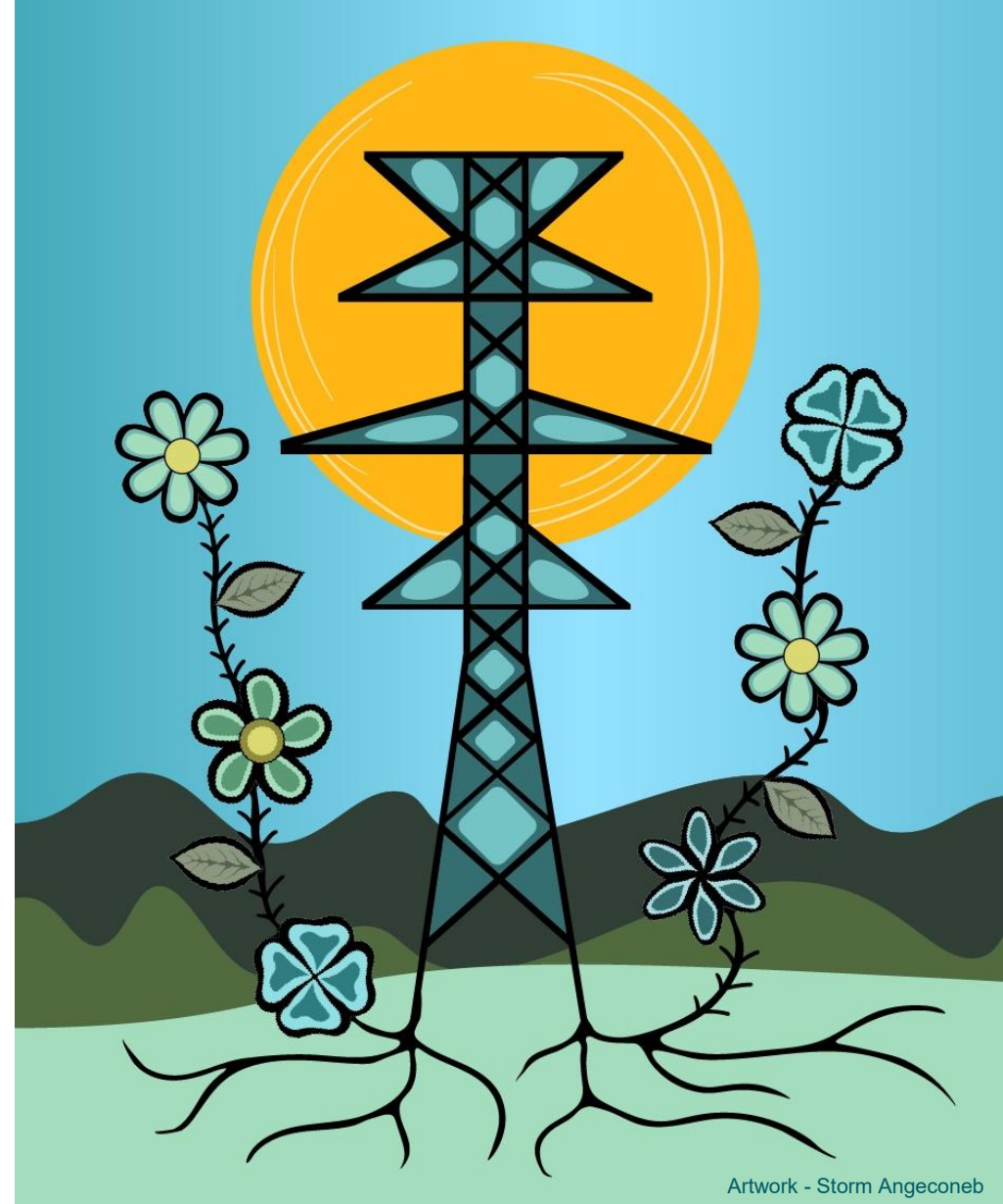


Welcome & Introductions



Goals for our meeting

- Share Project information and work to date
- Provide updates on North Shore Link Class Environmental Assessment
- Provide updates on the Northeast Powerline Environmental Assessment Update
- Highlight the Waasmoowin and First Nation engagement in all aspects of this work
- Review Next Steps on future project activities leading into construction phase and project completion



Artwork - Storm Angecone



Meeting Agenda

Partnership Overview

North Shore Link Project (NSL)

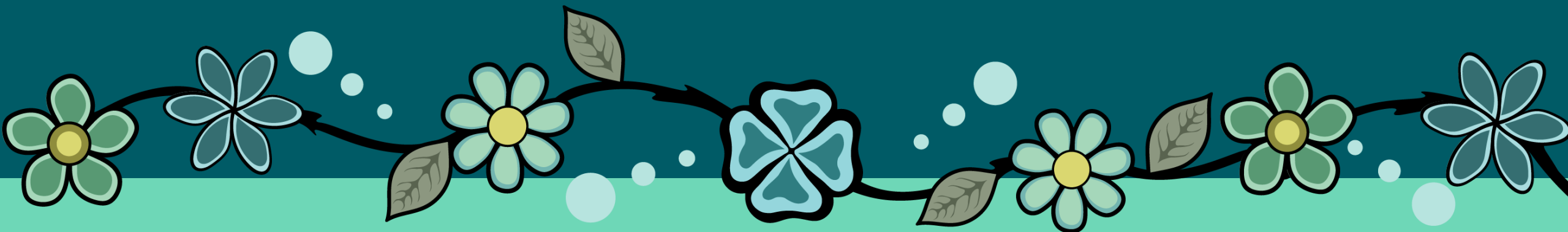
- Project Overview
- Class Environmental Assessment
- EA Evaluation & Preferred Route Announcement
- Next Steps
- Q&A

Northeast Power Line Project (NEPL)

- Project Overview
- Project Updates
- Next Steps
- Q&A

Closing Remarks & Open Session

Partnership Overview

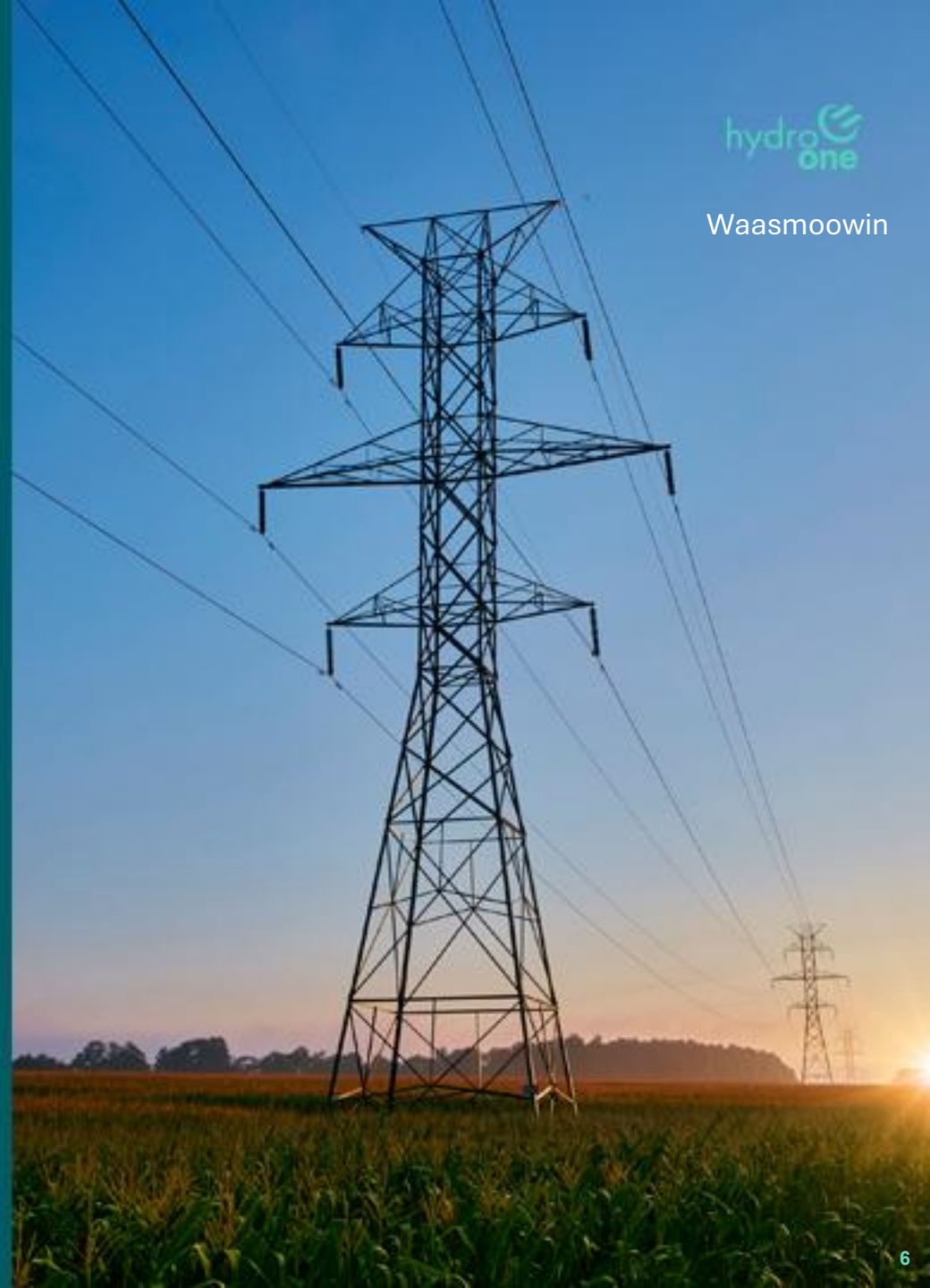


First Nations Equity Partnership Model

- New transmission lines in Ontario with a capital expenditure exceeding \$100 million in rate base.
- Net-zero supporting greenfield infrastructure.
- Meaningful commitments to early engagement and collaboration on decision making from the beginning.
- Support and collaboration on project financing, buy-in at electrification.
- Significant construction procurement and employment commitments for Indigenous community members and businesses.

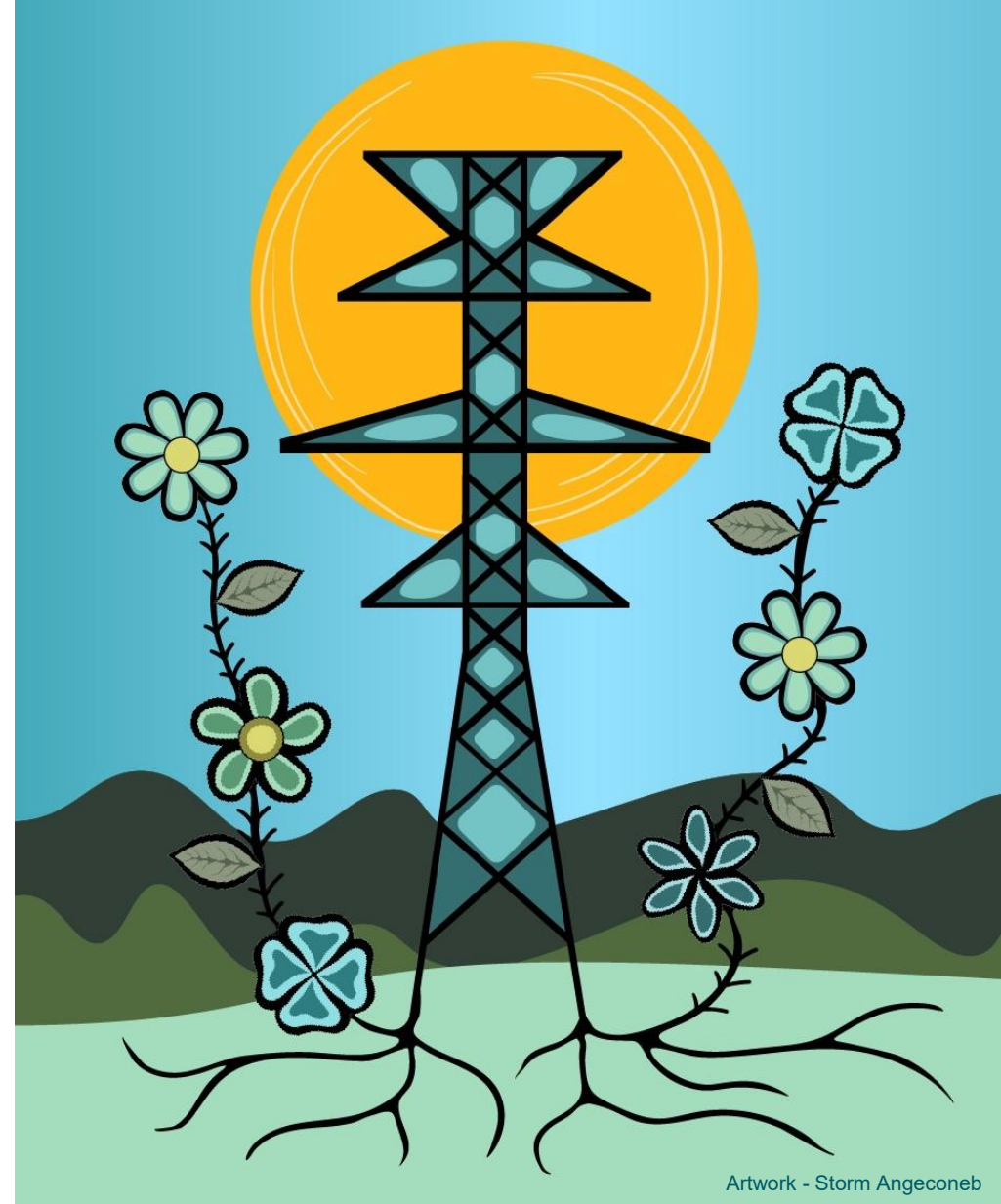


Waasmoowin



Waasmoowin Origin Story

- IESO Recommendation Report - Need for Northeast Bulk System Reinforcement - October 2022
- Late 2022, our First Nation partners met with Hydro One Networks Inc. (HONI) to learn about the 50/50 Equity Model.
- Early 2023, we met again with HONI to selected them as our co-proponent.
- Mid-2023, our First Nation partners wrote a letter to the Minister of Energy committing to work together cohesively to build these two transmission lines through to electrification in 2029.



Artwork - Storm Angecneb

Waasmoowin Origin Story

- **Minister of Energy Order in Council - October 2023**
 - **A new 500 kilovolt (kV) transmission line from Mississagi transformer station to Hanmer transformer station, including associated facility expansions or upgrades required at the terminal stations;**
 - **A new dual circuit 230 kilovolt (kV) transmission line from Mississagi transformer station to Third Line transformer station, including associated facility expansions or upgrades required at the terminal stations;**
- **Minister of Energy Notice to Ontario Energy Board in October 2023 designating HONI to complete these two new transmission lines as priority projects for completion by 2029.**
- **By April 2024, Waasmoowin Energy Inc. (WEI) was incorporated by 9 First Nation communities to partner with HONI leveraging the 50/50 Equity Model.**



Waasmoowin Energy Inc. - Our First Nation Partners



Waasmoowin Opportunities & Consultation Council (cont.)

- Comprised of:
 - Board of Directors
 - Council of Elders
 - Project Team
 - Project Manager, Finance Lead, Administrative Lead, Employment, Training & Procurement Specialist
 - Environmental & Archaeological Advisors
 - Engineering, Procurement & Contracting Advisor
 - Legal Advisor

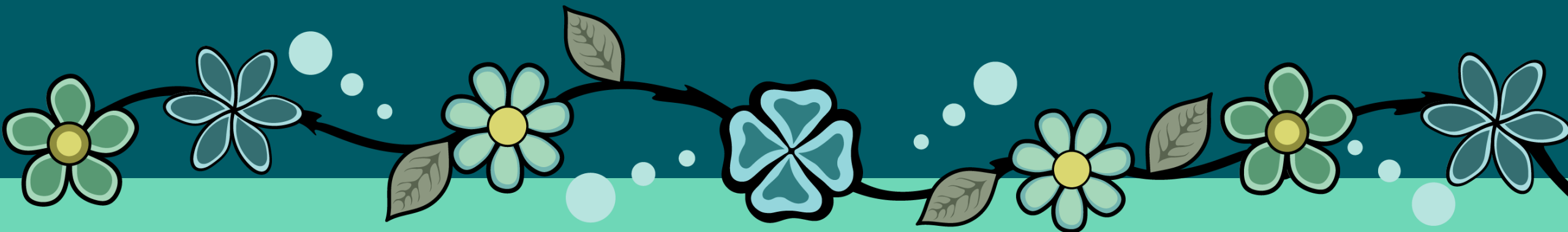


WOCC, Hydro One and First Nation Working Committees

- First Nation Environmental Committee
 - focused on all environmental and archaeology activities
- Technical Advisory Committee
 - focused on alternative routing for North Shore Link (NSL)
- First Nation Economic Development Committee
 - focused on procurement and contracting activities

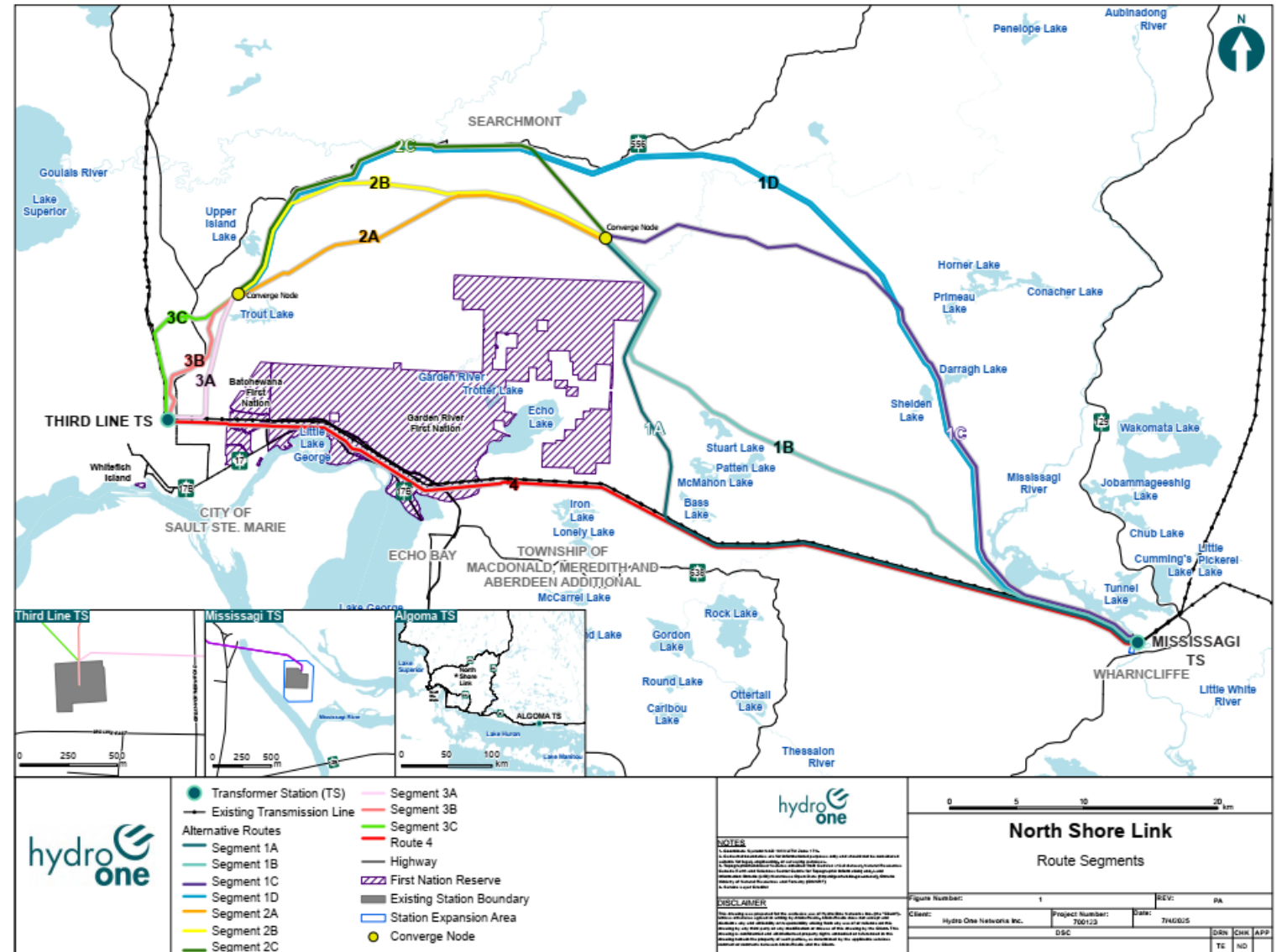


North Shore Link



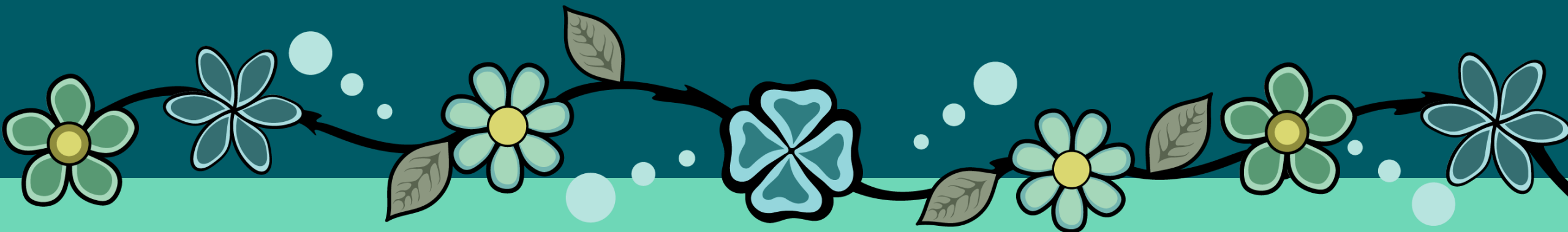
NSL Project Overview

- The NSL is a new double circuit 230 kilovolt (kV) transmission line that will extend between Mississagi Transformer Station (near Wharncliffe) and Third Line Transformer Station (in Sault Ste. Marie).



NSL

Class Environmental Assessment



NSL Class EA Process

What is a Class Environmental Assessment?

Ongoing engagement

Steps of a Class EA:

- Engage with Indigenous communities, the public, municipalities, interest groups and government agencies
- Collect environmental information
- Identify and evaluate route alternatives
- Select a preferred route
- Identify potential environmental effects and mitigation measures
- Prepare a draft Environmental Study Report (ESR) that will be made available for a 30-day public review and comment period
- Submit the final ESR

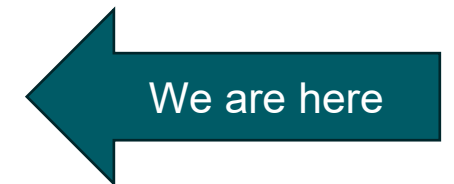


Technical Advisory Committee (TAC)

- A First Nation Technical Advisory Committee was formed with representatives from each of the First Nation Partner communities.
- Opportunity to gather input on route evaluation and criteria and provides a platform for sharing of Indigenous Traditional Ecological Knowledge values as input into the assessment via Information Sharing Agreements between Hydro One and First Nations Partners.
- 3 in-person TAC workshops & various touchpoints over the course of the evaluation.
- TAC # 1 was held to gain input from the First Nations on the criteria to be included in the evaluation of route alternative.
- TAC # 2 was held to finalize the list of criteria and come to an agreement on their relative importance to the evaluation.
- TAC # 3 was held in Spring 2025 to discuss the preliminary results of the evaluation.

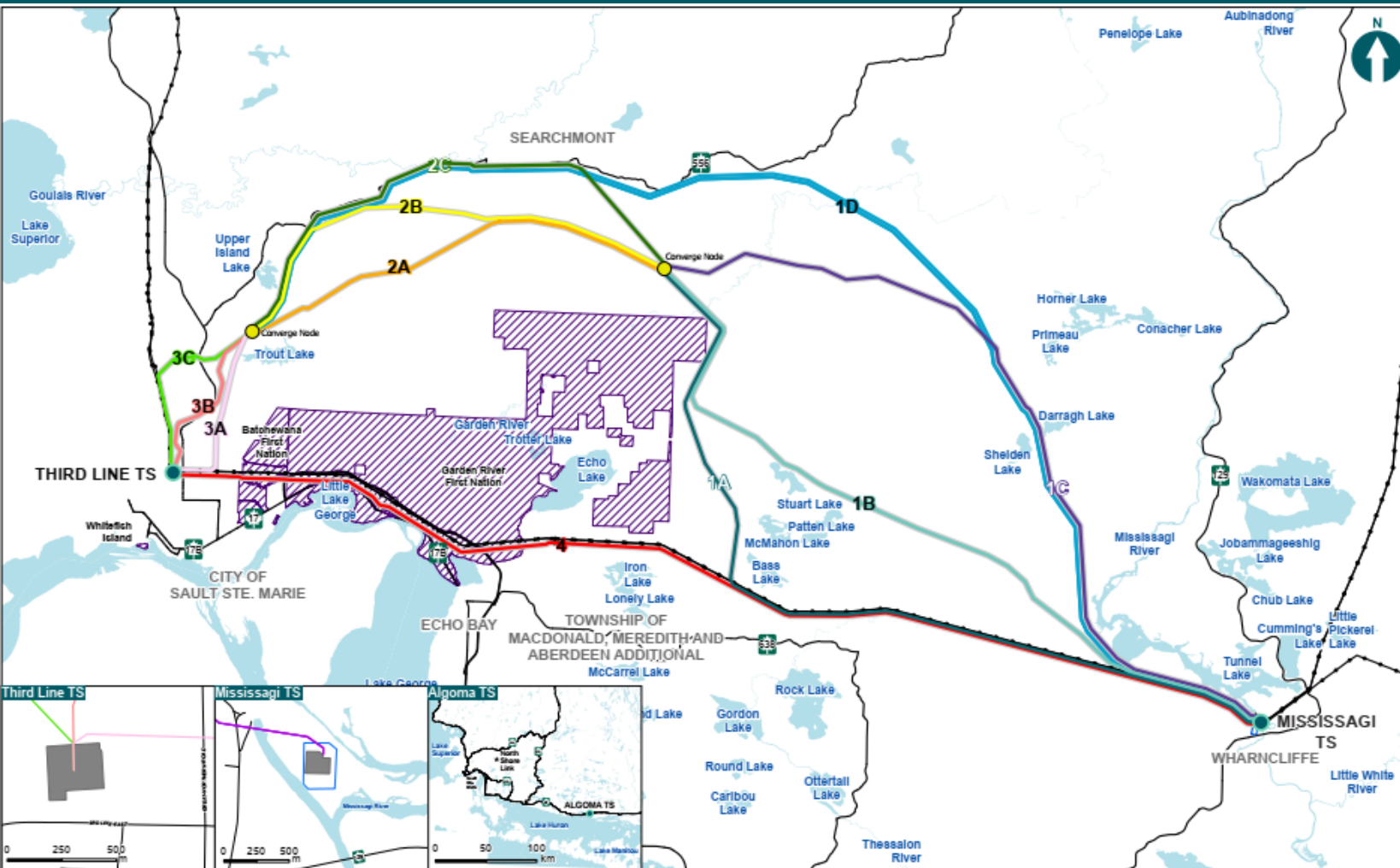
NSL EA Milestones Completed to date

Milestone	Date
Notice of Commencement	July 2024
Community Open House to introduce Project and Route Evaluation Process	Fall 2024
Field surveys (natural environment & archaeology), including Indigenous monitor participation	Summer and Fall 2024 Spring/Summer/Fall 2025
Route Evaluation including Technical Advisory Committee Workshops with Communities	Fall 2024/Winter 2025
Preferred Route Announcement Notice	Summer 2025
Community Open Houses to discuss evaluation results and preferred route announcement	Fall 2025



NSL Selecting a Preferred Route

Step 1. Assessment of identified route segments



- 11 route segments were identified.
- Segments could be combined to connect the Mississagi TS to Third Line TS.
- The top performing segments were combined to develop three full route alternatives:
 - **Northern route:** segments 1D and 3B
 - **Central route:** segments 1C, 2A and 3B
 - **Southern route:** segment 4

● Transformer Station (TS)

— Existing Transmission Line

Alternative Routes

— Segment 1A

— Segment 1B

— Segment 1C

— Segment 1D

— Segment 2A

— Segment 2B

— Segment 2C

— Segment 3A

— Segment 3B

— Segment 3C

— Route 4

— Highway

▨ First Nation Reserve

▭ Existing Station Boundary

▭ Station Expansion Area

● Converge Node

North Shore Link

Route Segments

Figure Number: 1 REV: RA

Client: Hydro One Networks Inc. Project Number: 700123 Date: 7/4/2015

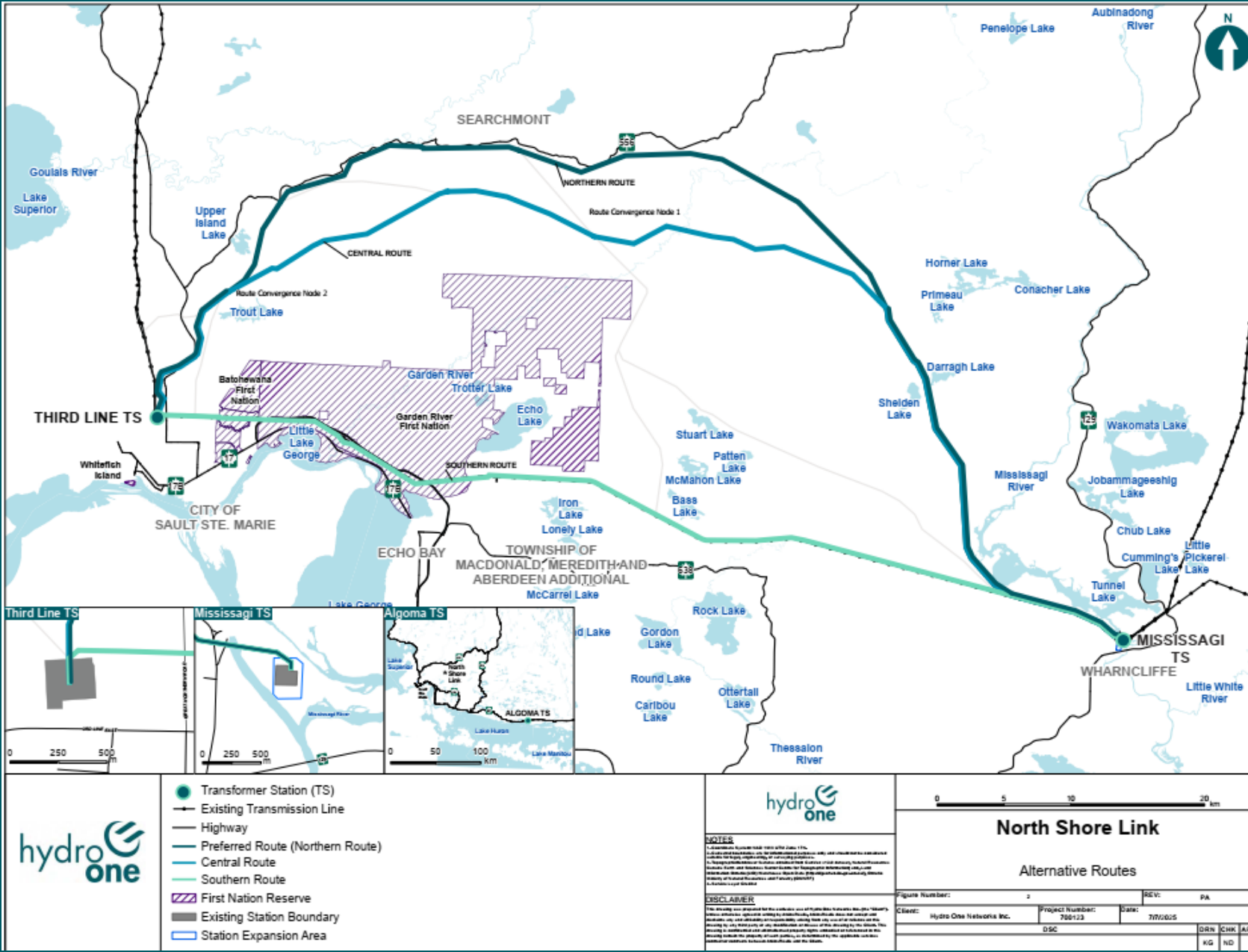
DSC DRN CHK APP





TE ND

NSL Selecting a Preferred Route

Step 2. Evaluation of full route alternatives

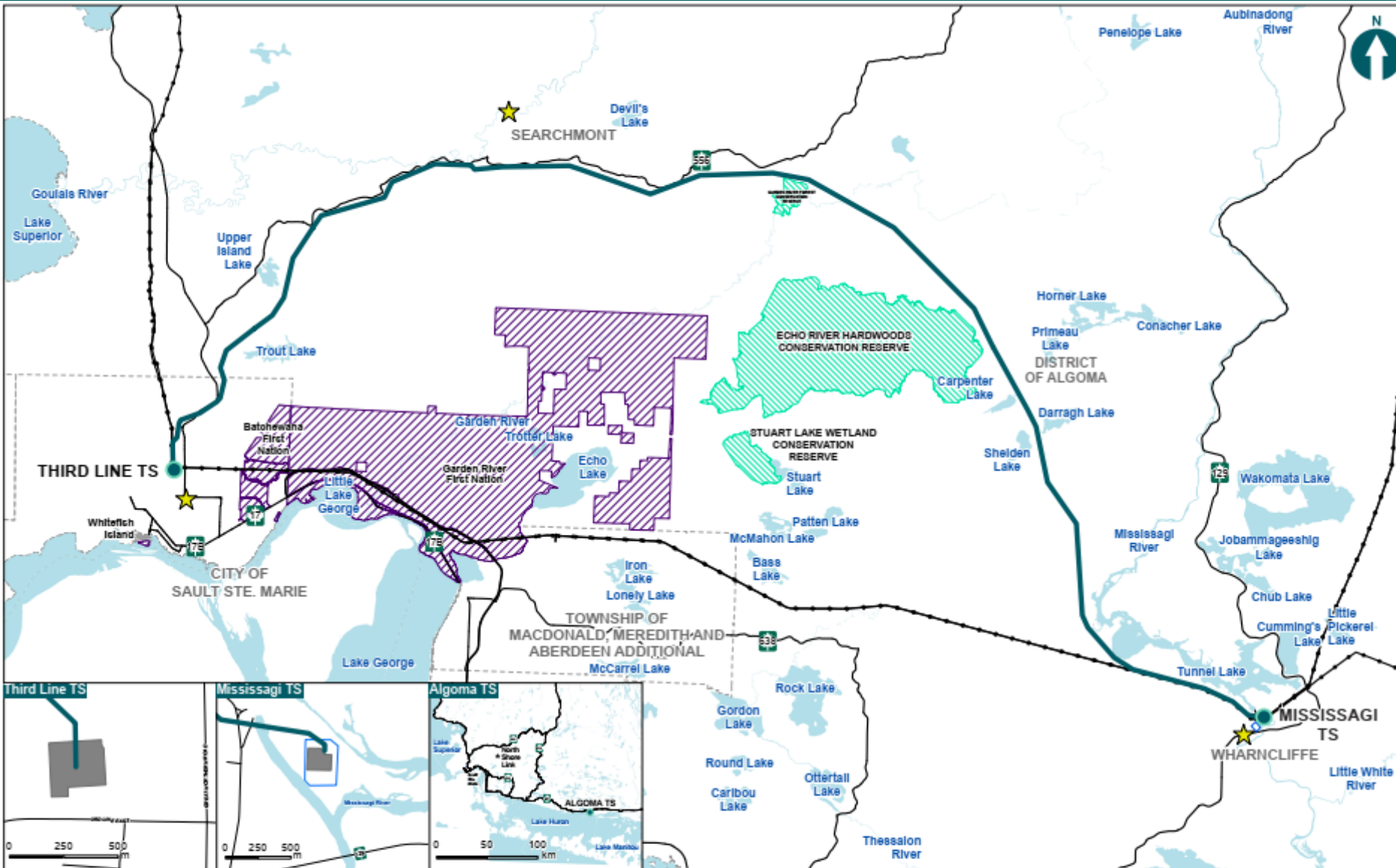
The three full route alternatives were assessed based on the evaluation categories, including feedback collected, to select a preferred route.



Category	Examples
 Indigenous Community Values	<ul style="list-style-type: none"> Traditional land use areas Areas of known Indigenous cultural significance Values identified from Indigenous Knowledge
 Natural Environment	<ul style="list-style-type: none"> Wetlands Provincial Parks Waterbodies Species at risk Conservation areas
 Socio-Economic Environment	<ul style="list-style-type: none"> Commercial and industrial facilities Mining claims Urban/residential areas Properties/land parcels Archaeological sites
 Technical Considerations	<ul style="list-style-type: none"> Reducing the number of angles Crossing of physical features like rivers, lakes, buildings and/or steep terrain features Real estate and land rights considerations Construction complexity and ability to complete construction on time

The Preferred Route

The Northern Route was selected as the Preferred Route.



hydro one

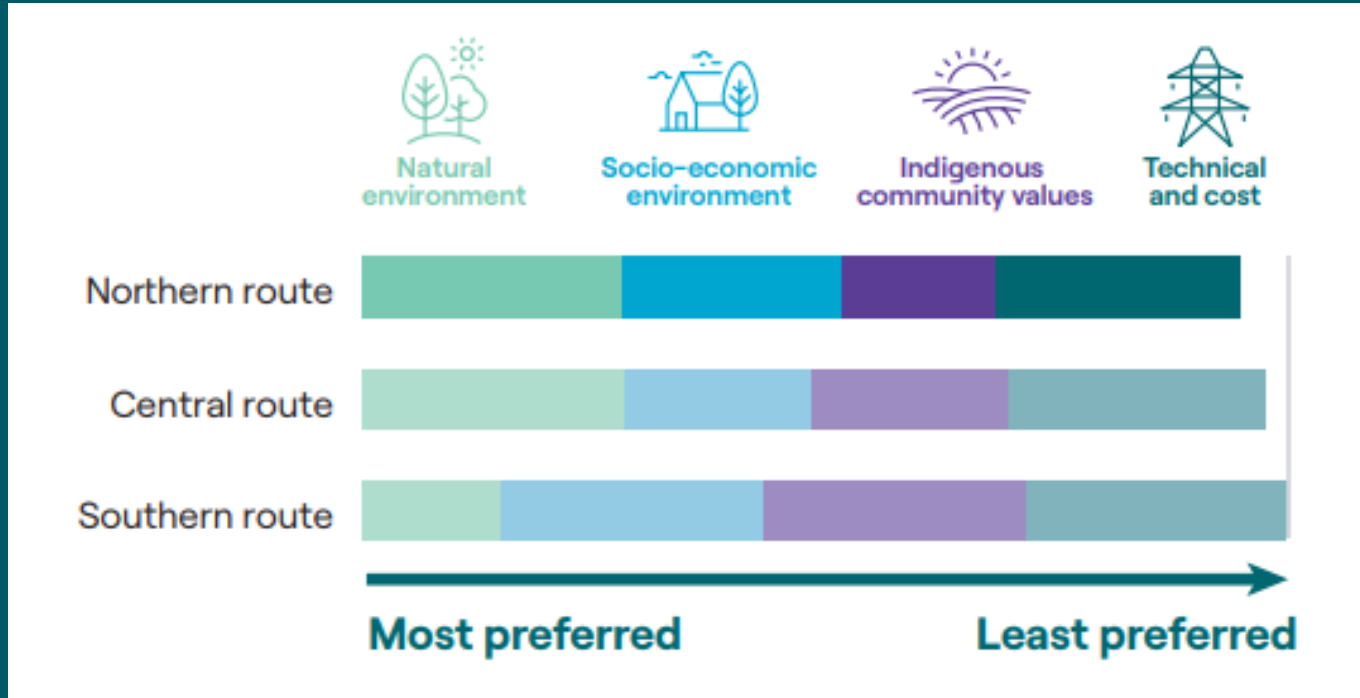
- Transformer Station (TS)
- Preferred Route
- Existing Transmission Line
- Highway
- Existing Station Boundary
- ▨ First Nation Reserve
- ▨ Conservation Reserve
- ▨ Municipal Boundary
- ▨ Station Expansion Area
- ★ Community Open House Location

0 5 10 20 km

North Shore Link Preferred Route

Evaluation Summary

Based on the evaluation of route alternatives, the northern route performed best overall and is the Preferred Route.

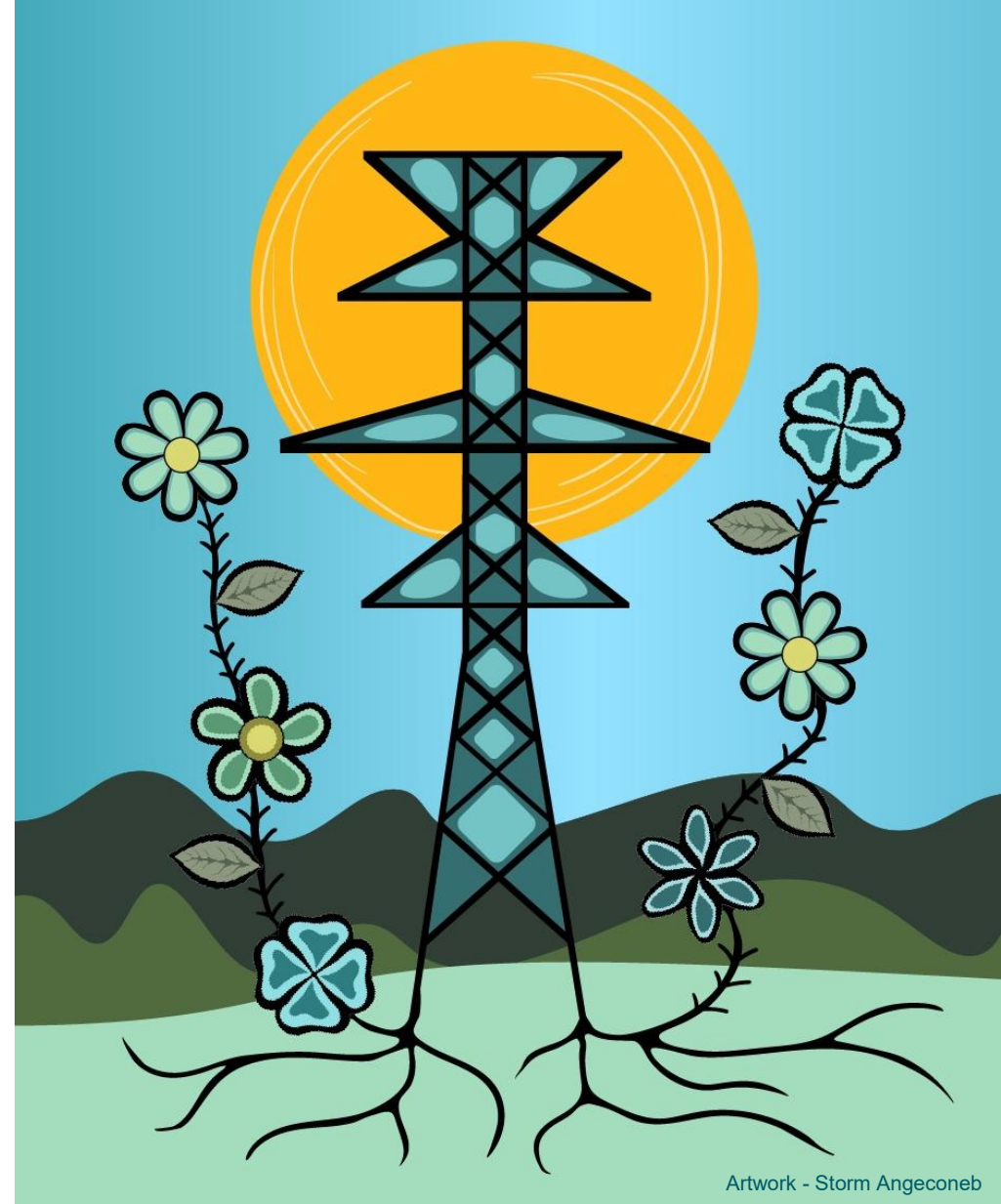


Waasmoowin Energy Inc.



Design of the Transmission Line

- Over the next several months, we will continue to complete more detailed environmental and technical studies to inform the design of the new line and identify mitigation measures for construction
- Integrating Indigenous Community Values into the design of the project through FN Environmental Committee and WOCC Board of Directors
- Including Waasmoowin technical input into the design of the lines



Artwork - Storm Angecone

NSL Field Work

Working with our First Nation Partners

- **Planning** – through the Environment Committee and Waasmoowin’s advisors we review the planning for our field programs.
- **Execution** – Opportunities for monitors from the member Nations are available and communicated through the two-week lookahead schedule.
- **Review** – Field summary reports and results of the investigations are shared with the Environment Committee and Waasmoowin for review and comment throughout the project.
- **Building** – Environmental and Archaeological training has been conducted with anyone interested to help ensure that anyone interested can learn more and be prepared for opportunities throughout the project lifecycle.



NSL Natural Environment Field Work

- **Bat Maternity Roosting (Completed)** – Spring 2025
- **Bat Acoustic Recording Units (ARU) (Completed)** – June 2025
- **Background Findings** – 8 Species of bat are present in the study area, 7 are currently listed as Species at Risk.
- **Amphibian Surveys (ARU)** – Spring 2025
- **Background Findings** – 9 Species of frog/toad and 5 species of salamanders are known to occur in the study area.

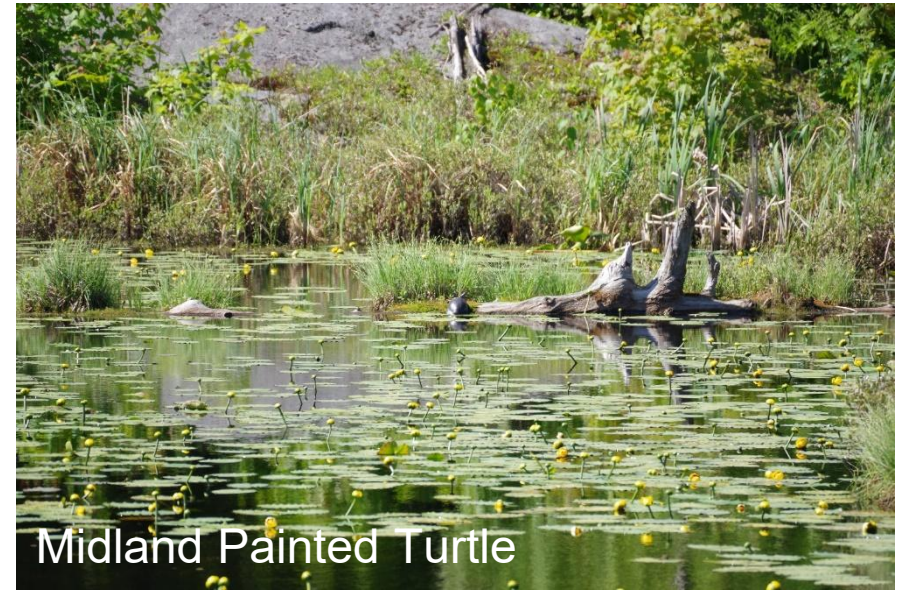


NSL Natural Environment Field Work

- **Turtle Overwintering (Completed)** – May/June 2025
- **Preliminary Findings** – 4 Species of turtle and are known to occur in the study area. Three are listed as Species at Risk. Turtles (all Midland Painted Turtles) were observed at 7 of the 11 sites with 3 sites confirmed as overwintering habitat.

- **Least Bittern/Wetland Birds (Completed)** – May/June 2025

- **Background Findings** – 70 Species of wetland bird species and are known to occur in the study area for breeding or migration. Four are listed as Species at Risk.



Midland Painted Turtle



Great Blue Heron

NSL Natural Environment Field Work

- **Breeding Birds (Completed)** – June 2025
- **Preliminary Findings** – At least 122 woodland/open habitat bird species have been observed in the study area. Fourteen are listed as Species at Risk including observes species Eastern Wood Peewee, Wood Thrush, and Canada Warbler
- **Crepuscular Birds (Completed)** – June/July 2025
- **Background Findings** – Common Nighthawk and Eastern Whip-poor-will listed as Species at Risk.



Canada Warbler



Chipping Sparrow

NSL Natural Environment Field Work

ELC/Wetlands/Botanical Surveys (Completed) – Spring/Summer/Fall Surveys for 2025

Background/Preliminary Findings – Over 18 different communities classified to ecosite level with over 150 different plant species. Butternut and Black Ash are listed as Species at Risk.



NSL Natural Environment Field Work

Fish and Fish Habitat (Completed) – Summer 2025

Background/Preliminary Findings – Aquatic Habitat assessments were carried out as well as electrofishing or eDNA sampling. 67 Species of fish and 8 species of mussel are known to occur in the study area. Three fish species and one mussel species are listed as Species at Risk. Species of interest caught include Small Mouth Bass and Brook Trout.



Brook Trout (juvenile)



Brook Trout (adult)

NSL Archaeological Assessment –

- Archaeology work has been ongoing in the 2025 field season conducted by Aecom
- Participation from Indigenous monitors
- No Archaeological finds encountered to date
- Archaeology work will continue into 2026

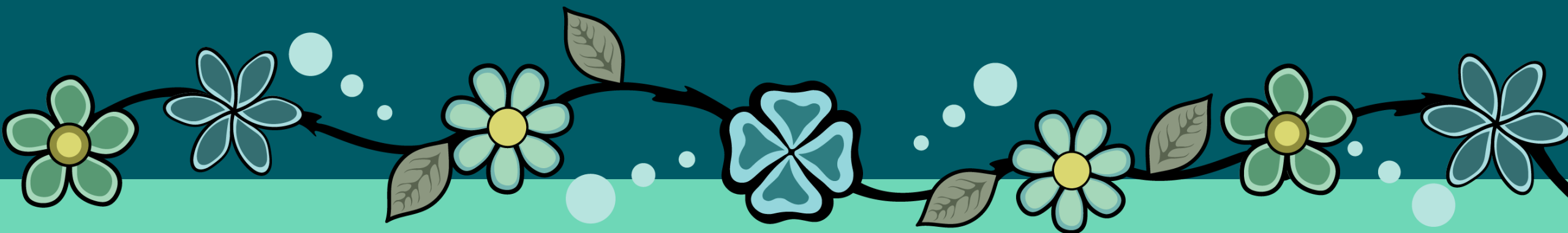


NSL Next Steps

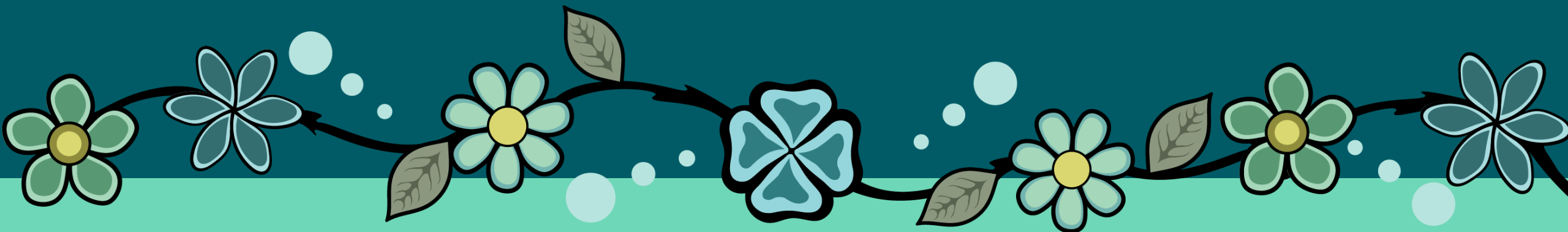
Activity	Date
Archaeological field work	Spring/Summer/Fall 2026
Draft Environmental Study Report public review period	Spring 2026
Final Environmental Study Report & EA Completion	Fall 2026
Permits & approvals (including S.92)	2026-2027
Construction start	2027
Project in service	2029

Hydro One will be providing opportunities for meaningful Indigenous community involvement and input along every step of the Project

NSL Q&A

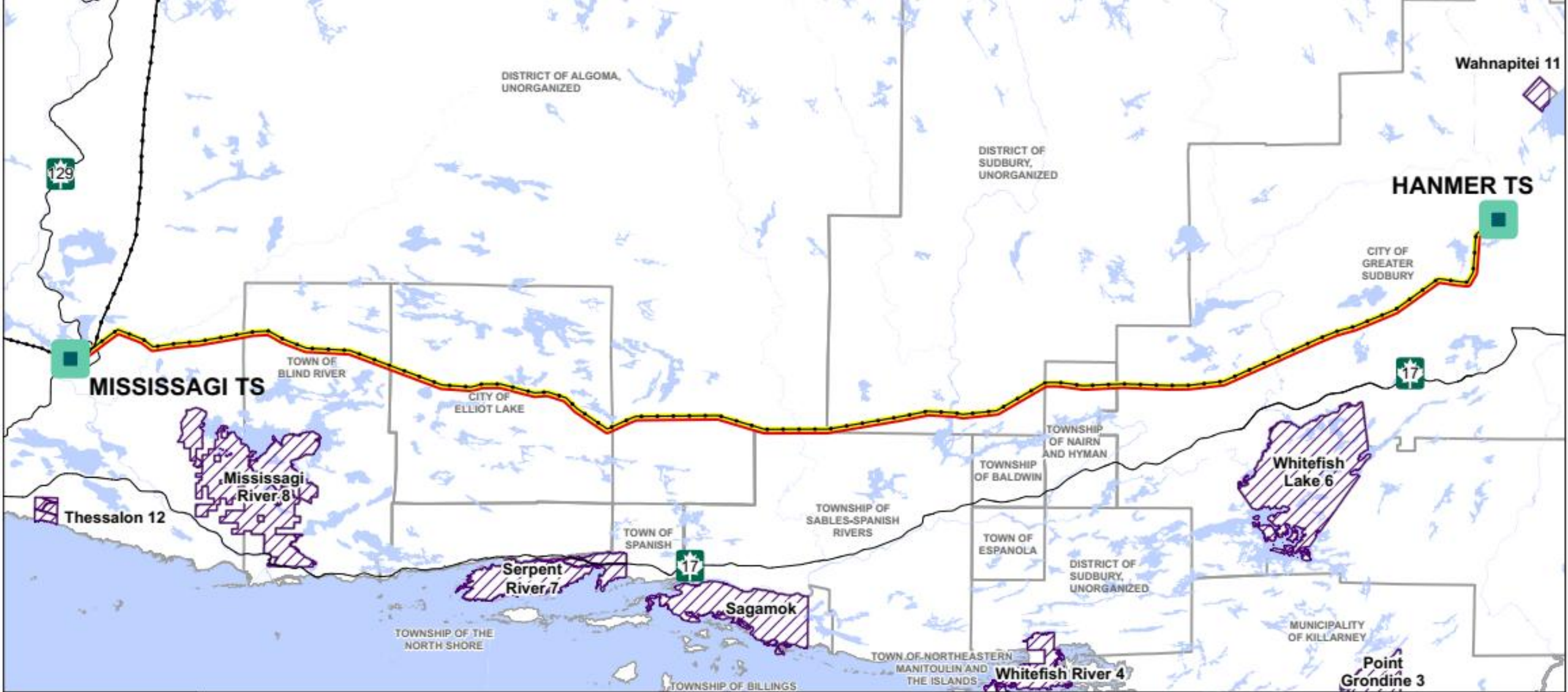








Northeast Power Line



NEPL Project Overview

- The NEPL is a new single-circuit 500 kV transmission line (approx. 205 km in length) between Hanmer TS, located in the City of Sudbury, to Mississagi TS, located in the District of Algoma.

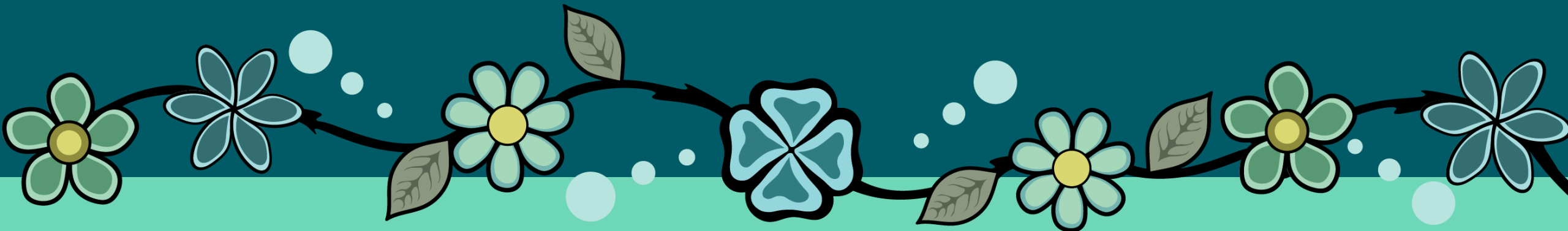


-  Transformer Station (TS)
-  Existing Transmission Line
-  Existing Corridor for Future Northeast Power Line
-  Proposed New Line
-  Highway
-  First Nation Reserve
-  Municipal Boundary

Northeast Power Line:
General Area Map



Update to NEPL Environmental Process



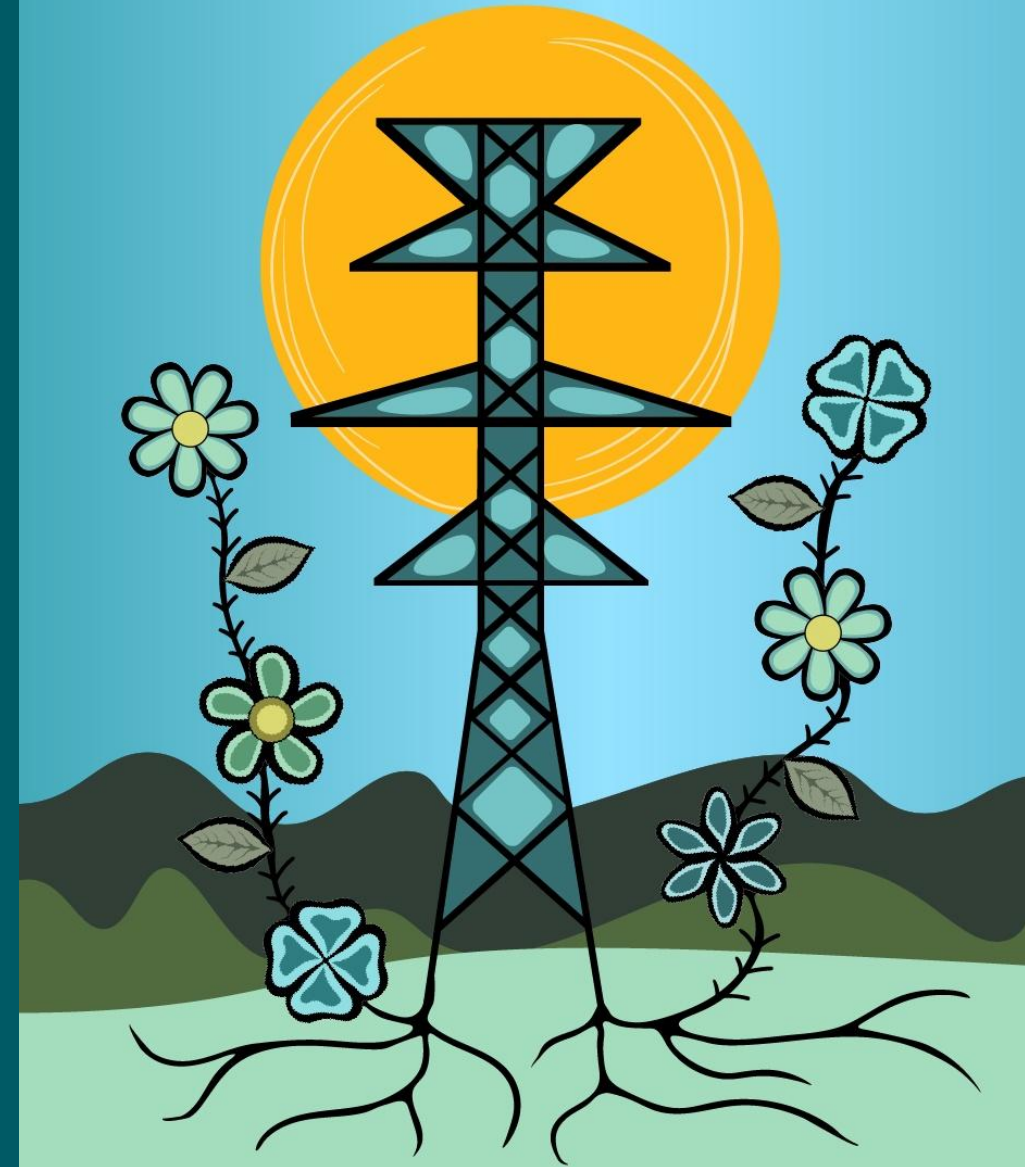
MECP Regulation Update

- MECP has recently published an Environmental Registry of Ontario (ERO) posting regarding a new regulation for Environmental Assessment Act requirements for NEPL
- Regulation posting for 45-day public review period ending mid-Sept 2025
- New regulation will outline next steps for HONI which will formalize the commitments already made by HONI regarding environmental studies and engagement on the project



Anticipated Updates to Environmental Process

- HONI's current approach:
 - Updating all technical environmental surveys along the approved corridor to today's standards
 - Summarizing field work, consultation and engagement in an "Environmental Update Report" for First Nation Partner Review
- New MECP regulation approach:
 - Environmental Update Report now called "Environmental Report"
 - Environmental Report published for a 30-day public review period

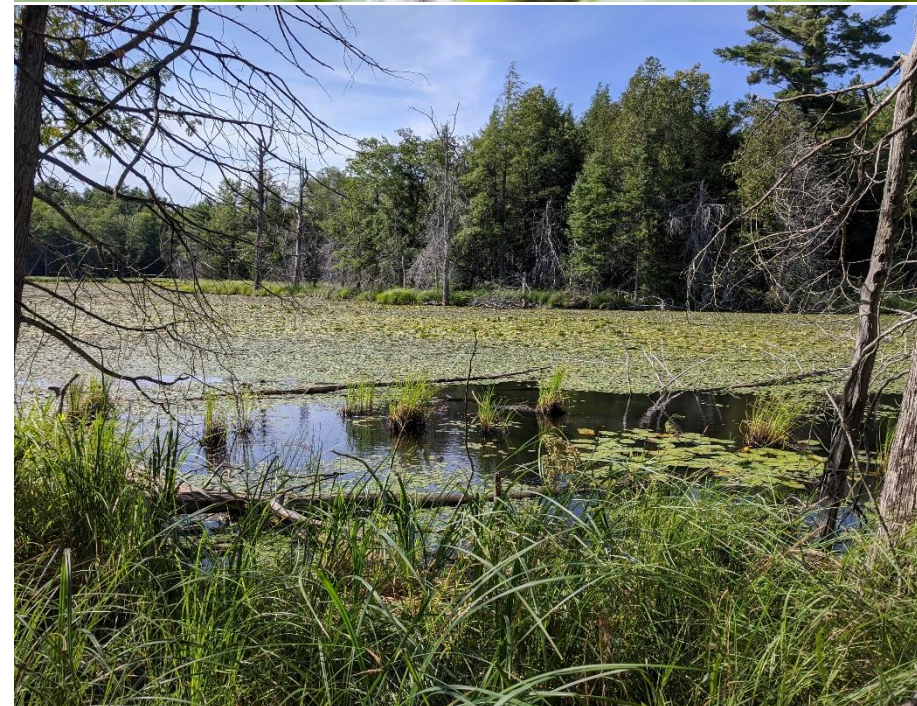


NEPL Natural Environment Field Work 2025

In addition to the surveys completed in 2024, the following remaining surveys were completed in the 2025 field season:

- **ELC/Wetlands/Botanical Surveys: (Completed)**
Summer 2025

Findings: more than 165 plant species identified from surveys of 32 ecosites including Black Ash swamp. Butternut and Black Ash are listed as Species at Risk.



NEPL Natural Environment Field Work 2025

- **Fish and Fish Habitat – Summer 2025**
(completed)
- Aquatic Habitat assessments were carried out as well as electrofishing or eDNA sampling. 22 Species of fish were confirmed as present within 1km of the sampling points. Three fish species and one mussel species are listed as Species at Risk. None were identified from sampling.



Stickleback



NEPL Archaeological Assessment –

- Archaeology work has been ongoing in the 2025 field season conducted by ASI & ARA
- Participation from Indigenous monitors
- Archaeological finds were encountered and Stage 3+ required
- Archaeology work will continue into 2026



NEPL Next Steps

Activity	Date
Environmental Report 30-day Public Review Period	TBD (anticipated early 2026)
Archaeology field work	Spring/Summer/Fall 2026
Permits & approvals (including S.92)	2026-2027
Construction start	2027
Project in service	2029

Hydro One Forestry Maintenance

Purpose:

To keep right of ways clear to ensure reliability of the electrical system and to protect public safety from electrical hazard and natural disasters such as forest fires.

Integrated vegetation Management:

Using the appropriate method of vegetation maintenance to achieve desired result in promoting biodiversity of flora and fauna within the utility corridor.

Industry methods include:

Manual – Hand cutting methods (chainsaw)

Mechanical – use of mechanical equipment (grinders)

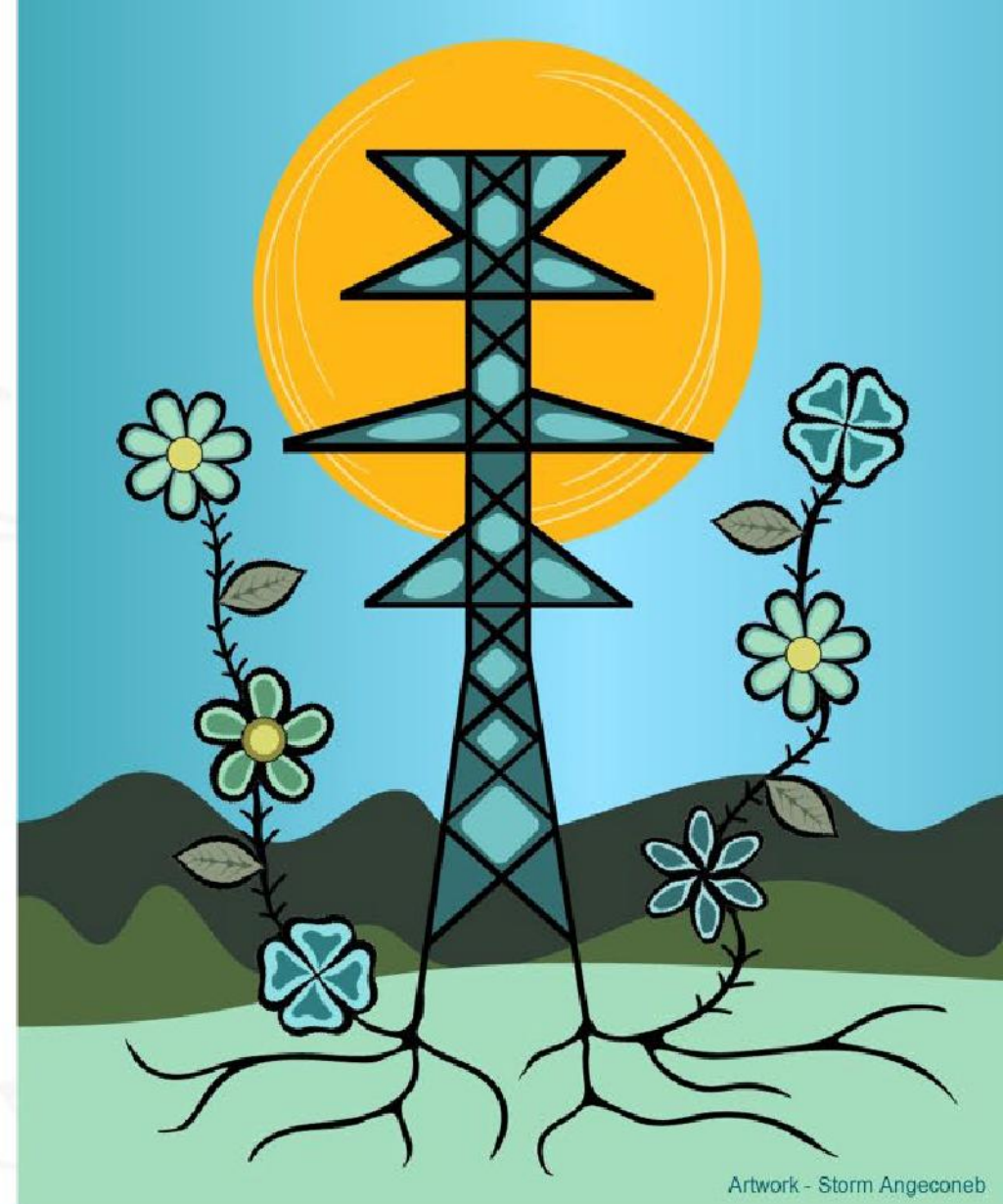
Chemical – Selective broad leaf herbicide (spot treat)

Cultural – Planting desired species (pollinator plots)

Biological – Use of live organisms (eg. goat trial)

Every site is accessed for characteristics / sensitivities and selected methods are applied.

It's not a one fits all approach!



Artwork - Storm Angeconeb

Only species that will grow to the height of the infrastructure are mitigated (incompatible), all other vegetation is promoted to increase biodiversity and out competes natural germination (compatible). Selective application methods.

No Aerial spray – uncontrollable to selective approach

No Glyphosates are used for ROW maintenance whatsoever – Glyphosate is a nonselective herbicide that would also kill the compatible species

Hydro One has adopted herbicides tailored to the agricultural industry which have been approved by Health Canada to be safe for humans and the environment

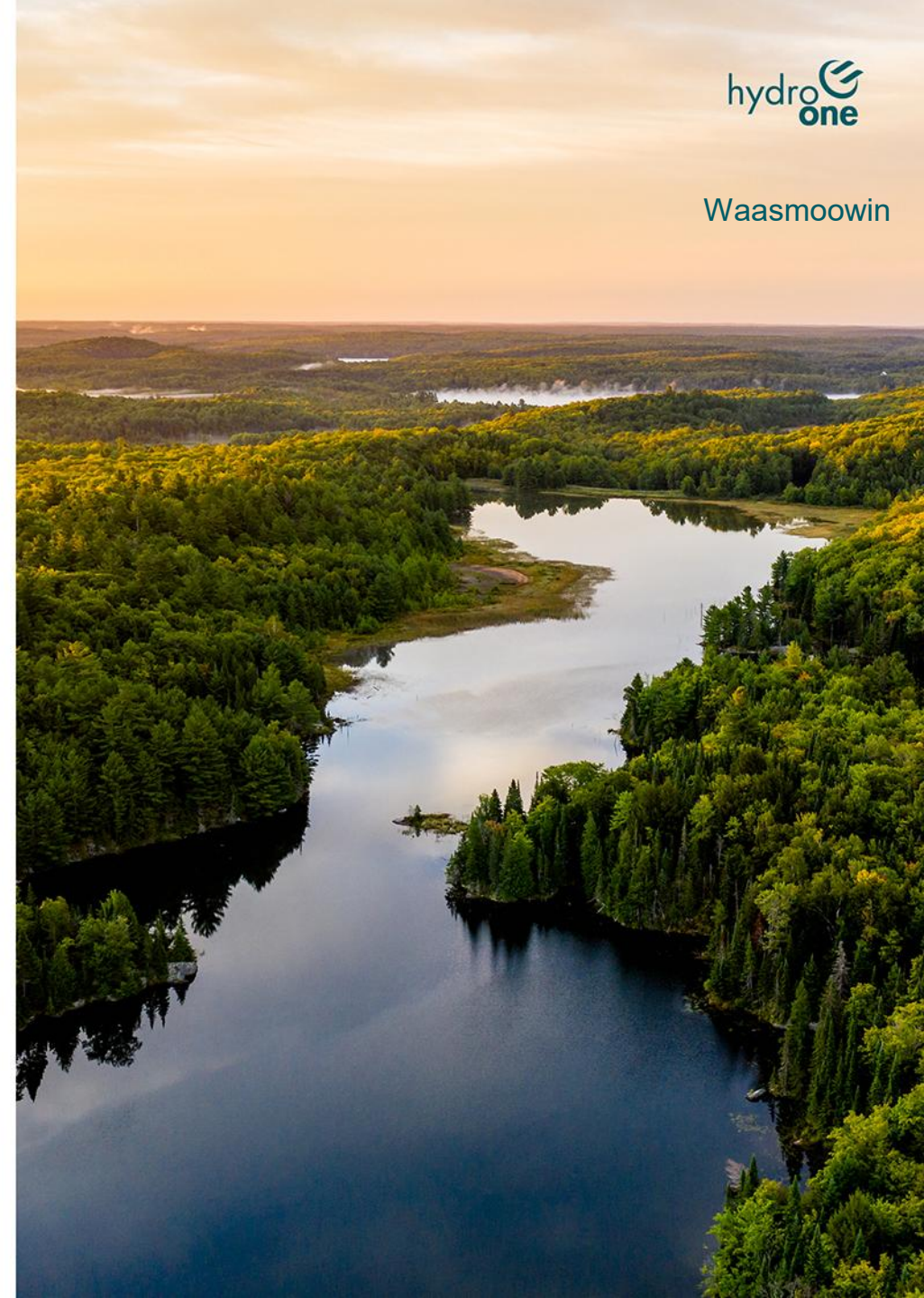


In collaboration with our Waasmoowin First Nation partners, HONI is committed to exploring and incorporating alternative approaches for vegetation management based on emerging technologies and industry best practices for the full project life cycle.

The health and safety of our human and natural environment is a shared priority with our Waasmoowin partners.

NEXT STEPS

- **Completion & reporting on 2025 environmental and archaeology field seasons.**
- **Future vegetation management planning discussions between HONI, WOCC, FN Environmental Committee and WOCC Board of Directors.**
- **2026 archaeology field season planning**
- **Preparation of Environmental Assessment Protection Plan to be implemented during construction.**
- **Planning of First Nation Environmental Monitoring Team to be implemented during construction.**



Miigwetch

Waasmoowin
Energy Inc.

